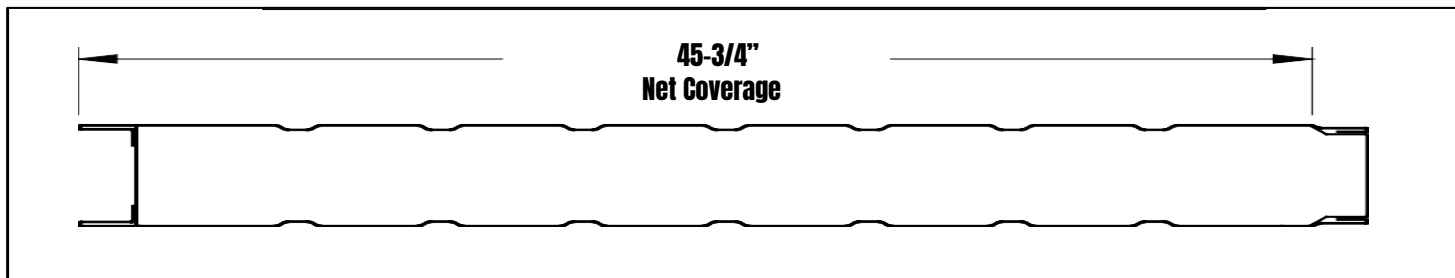


# SLIP LOCK PANEL SYSTEM - SLP - 100 SERIES

## SPECIFICATIONS



### DESCRIPTION

A versatile insulated building panel with a tongue and groove joining system roll-formed along the edge to meet all your needs.

### RECOMMENDED USES

Agricultural, Cold-rooms, Freezers, Clean-rooms, Caravan Annexes, Roofs, Partitioning, Portable Buildings.

**Width:** 45-3/4"

**Length:** To Order

**Skin:** 26 Gauge G-90 hot dipped galvanized (ASTM 446) with a baked on anti- microbial white epoxy paint.

**Core Material:** Expanded Polystyrene (EPS) with a minimum density of 1.0 lb. per cubic foot, compliant with ASTM C578 standards, and CFC-free. Fire retardant additives are included for enhanced safety.

**Thermal Properties:** At a mean temperature of 25° F, EPS offers an R-value of 4.35 per inch. At a mean temperature of 40°F, the R-value is 4.17 per inch.

**Weight:** 2"- 1.99, 3"- 2.05, 4"- 2.15, 5"- 2.24, 6"- 2.37, 7"- 2.40, 8"- 2.49, 9"- 2.57, 10"- 2.65, 11"- 2.73, 12"- 2.81.

**Adhesive:** Polyurethane, CFC-free.

### Flammability Properties of SLP 100 Panels:

ASTM E84-95 Flame Spread Index = 5  
ASTM E84-95 Smoke Development Index = 80  
(Based on 4" thickness)  
ASTM E84-95 Ignition and Self-Ignition temperature 610°F and 850°F respectively.

**Span Chart:** Available Per Request.

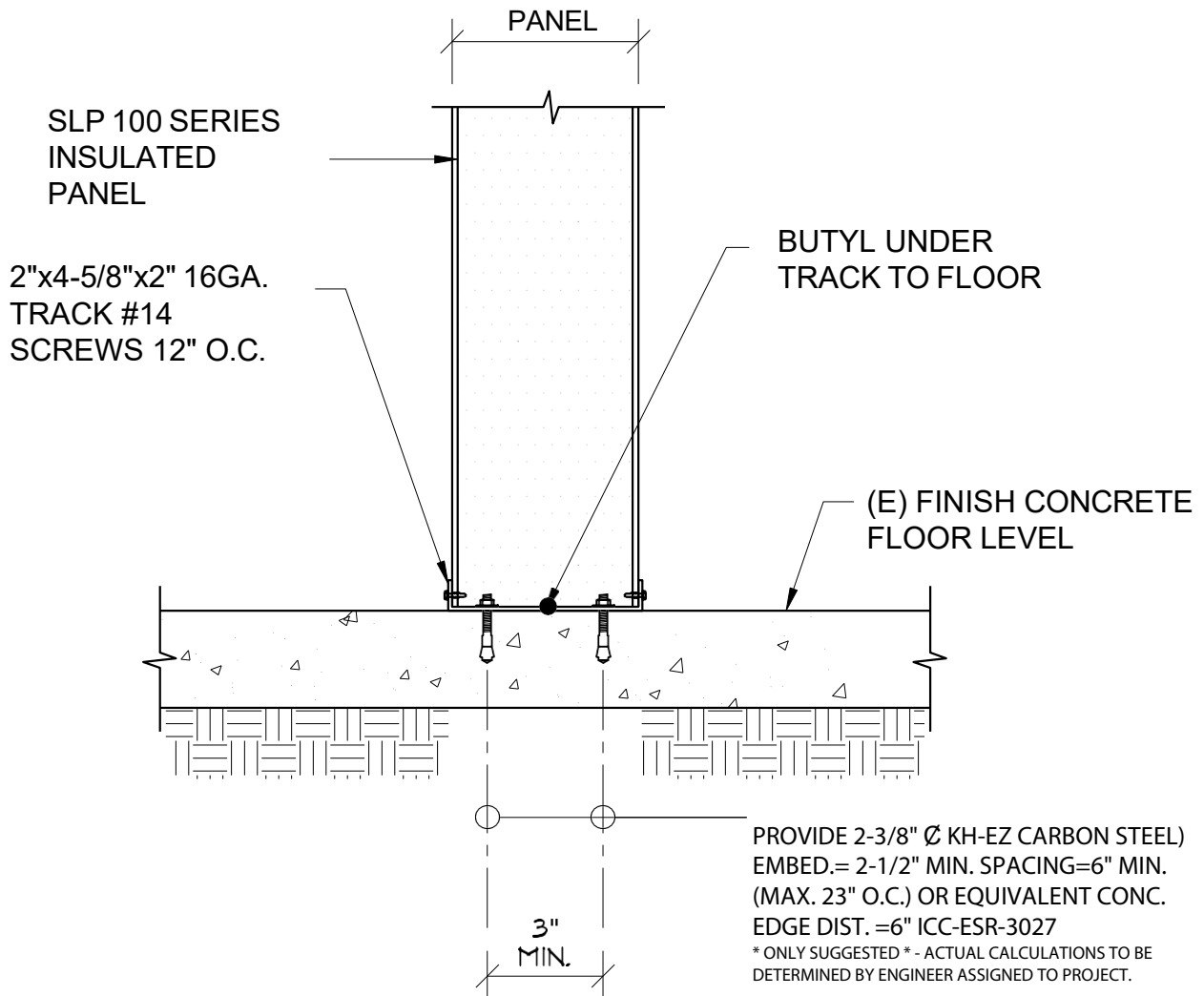
**Variations:** Contact Us.



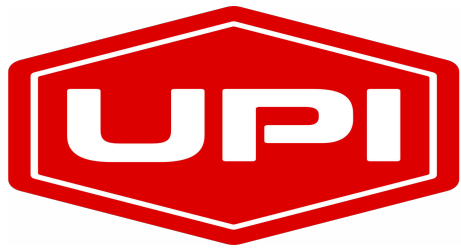
# PANELS



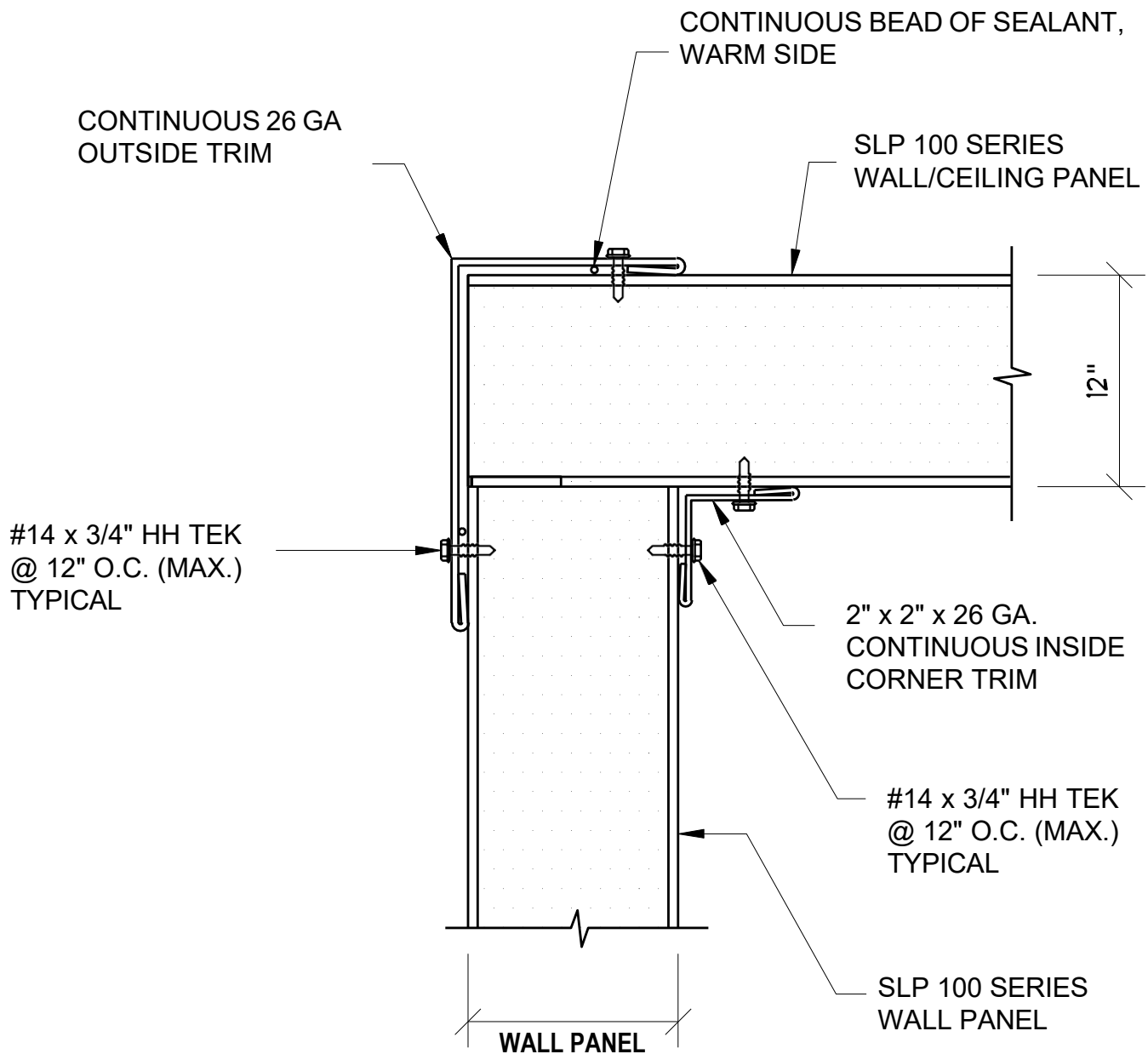
# PANELS



WALL TO SLAB



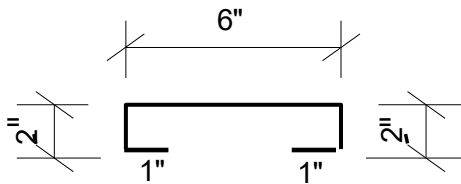
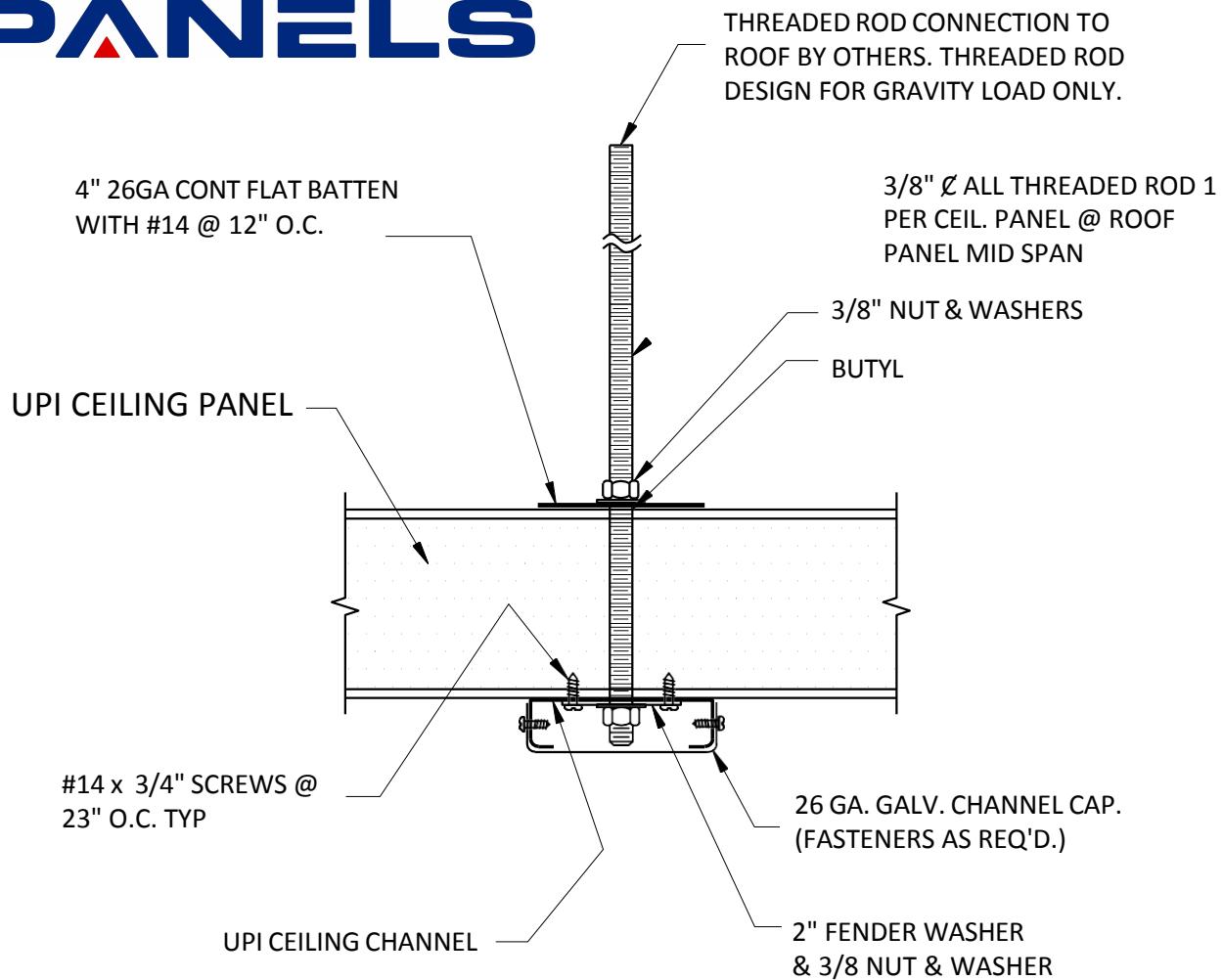
# PANELS



## WALL TO CEILING CORNER DETAIL



# PANELS



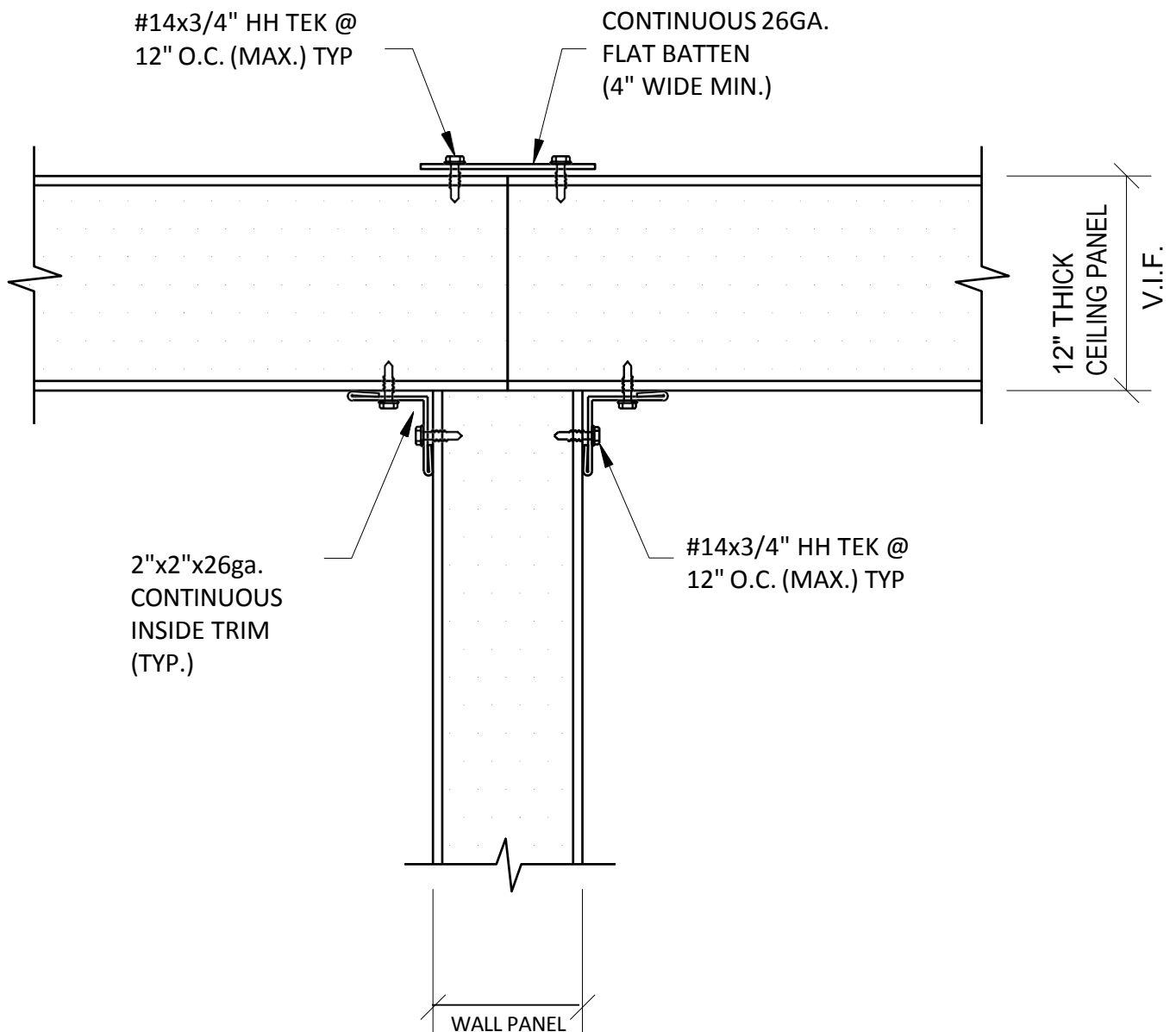
UPI 14 GA. CEILING CHANNEL

## SUSPENDED CEILING

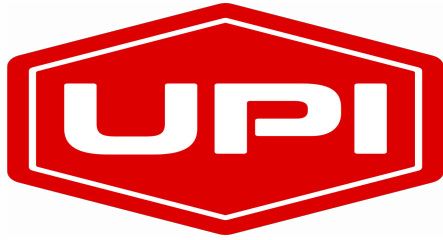




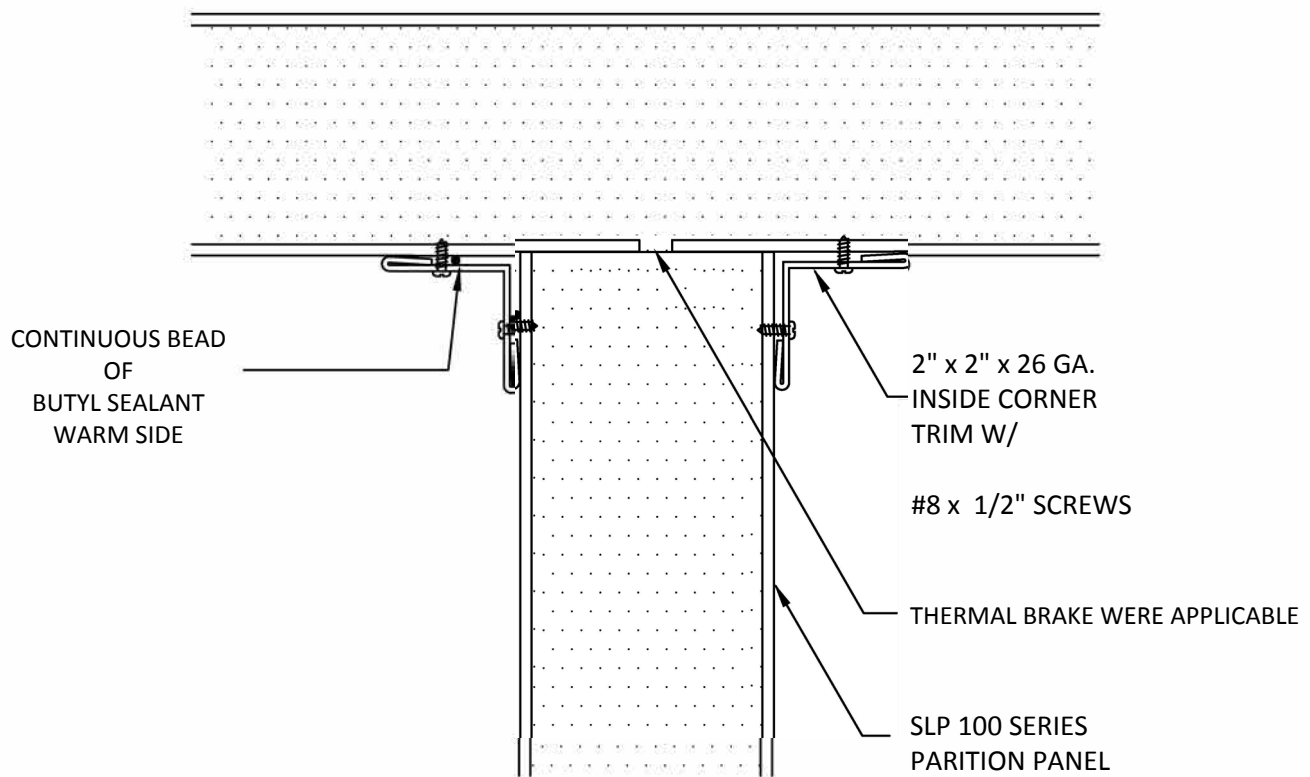
# PANELS



## CEILING PANEL TO CEILING PANEL



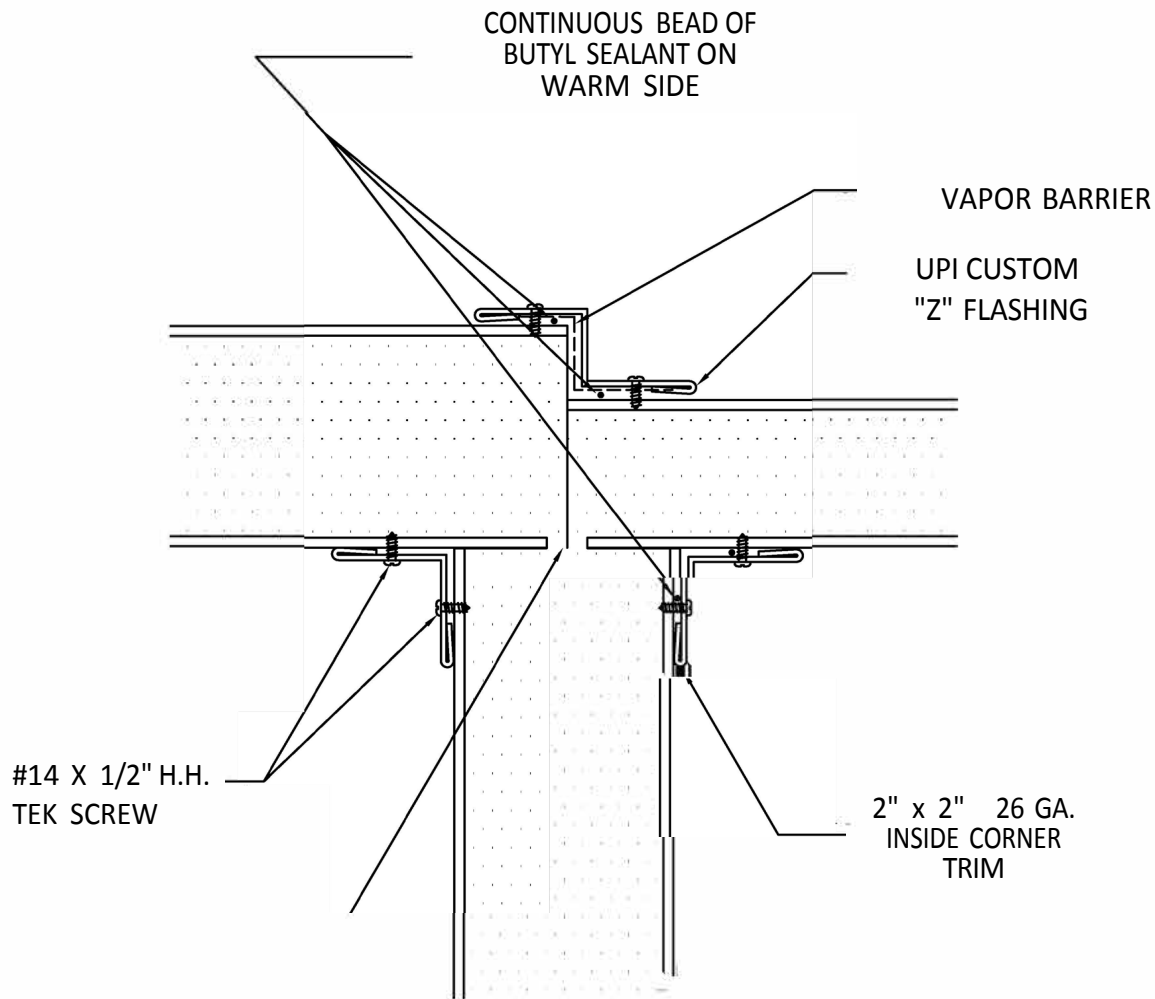
# PANELS



## PARTITION WALL DETAIL



# PANELS



## CHANGE IN THICKNESS DETAIL



# PANELS

## WARRANTY AND LIMITATION OF LIABILITY

UNITED PANEL INDUSTRIES, WARRANTS THAT THE INSULATING PANELS AND LINERS IT SUPPLIES HEREUNDER SHALL CONFORM TO THE DESCRIPTION STATED HEREIN AND SHALL NOT PEEL, DELAMINATE OR OTHERWISE DETERIORATE SO AS TO RENDER THEM UNSUITABLE FOR USE IN THE APPLICATION FOR WHICH ORIGINALLY SOLD FOR A LIFETIME WARRANTY FROM DATE OF SHIPMENT BY UNITED PANEL INDUSTRIES, PROVIDED. HOWEVER, SHALL NOT BE LIABLE FOR FAILURES DUE IN WHOLE OR IN PART TO ANY ACT OF GOD, FIRE OR OTHER CASUALTIES, ABUSE OR ABNORMAL USE, OR OTHER SIMILAR CAUSES: AND PROVIDED FURTHER, THAT SUCH PANELS AND LINERS ARE USED IN A BUILDING APPLICATION OF ADEQUATE DESIGN, ENGINEERING, AND CONSTRUCTION, AND CURRENT DESIGN AND INSTALLATION RECOMMENDATIONS ARE FOLLOWED.

**THE ABOVE WARRANTY IS IN LIEU OF ALL OTHER WARRANTIES EXPRESS OR IMPLIED, INCLUDING ANY IMPLIED WARRANTY OF MERCHANT ABILITY OR FITNESS FOR A PARTICULAR PURPOSE.**

IT IS EXPRESSLY UNDERSTOOD THAT UNITED PANEL INDUSTRIES, LIABILITY AND PURCHASER'S EXCLUSIVE REMEDY HEREUNDER FOR ANY CAUSE WHATSOEVER, INCLUDING ALLEGED NEGLIGENCE, IS LIMITED TO REPAIR OR REPLACEMENT OF NON CONFORMING GOODS.

**IN NO EVENT SHALL UNITED PANEL INDUSTRIES, BE LIABLE FOR SPECIAL, INDIRECT, CONSEQUENTIAL OR INCIDENTAL DAMAGES.**

PURCHASER SHALL INSPECT THE GOODS FURNISHED HEREUNDER IMMEDIATELY AFTER DELIVERY. PURCHASER'S FAILURE TO GIVE NOTICE OF ANY CLAIM WITHIN (30) DAYS FROM DATE OF DELIVERY SHALL CONSTITUTE AN UNQUALIFIED ACCEPTANCE OF SUCH GOODS.

THANK YOU,

UPI PANELS